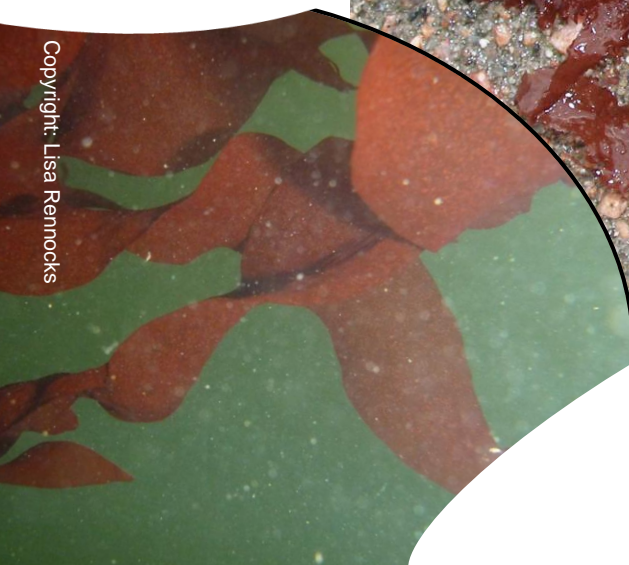


Devil's tongue weed

Grateloupia turuturu

Originating from Japan and Korea, this alga arrived in England end of the sixties, possibly in oyster shipments or fixed under ship's hull. The large fast growing blades can potentially displace native algae and shade neighbouring species.

Copyright: Lisa Rennocks



Copyright: Bryony Chapman – Kent Wildlife Trust

Big red alga (turning to brownish during the winter) composed of 1 to 6 long blades which can be up to 15cm in width and 1 meter long.



PANACHE

Protected Area Network Across
the Channel Ecosystem