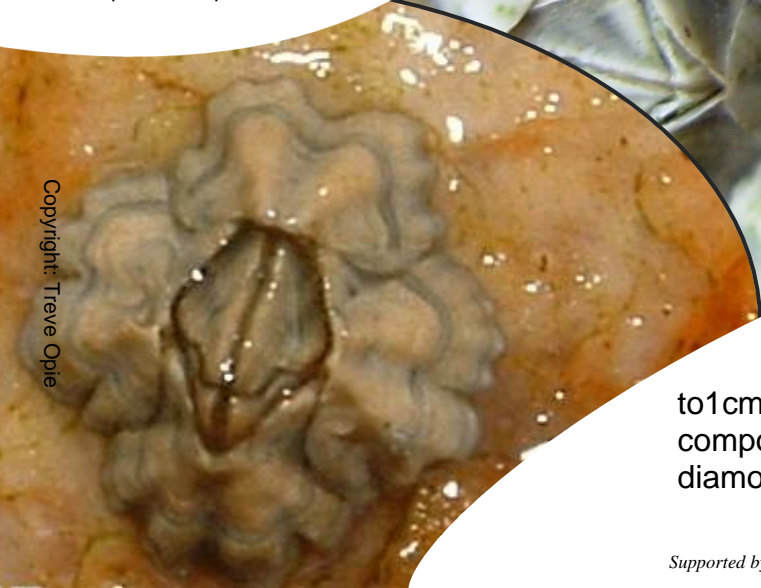


Darwin's barnacle (or New-Zealand Barnacles) *Elminius (Austrominius) modestus*

This barnacle apparently arrived attached to merchant and war ships during World-War II, first in England and then in France. It quickly extended its range, especially in sheltered zones where it competes with other, native, barnacles.



Copyright: August Le Roux



Copyright: Treve Opie

It's a small grayish barnacle up to 1cm approximately. Its walls are composed of 4 plates presenting a diamond shaped opening